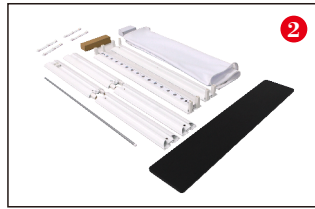


Lucid Storage Counter



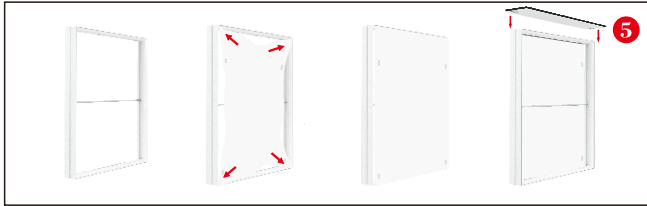
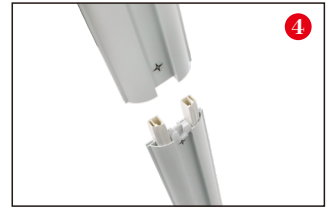
1, A big package and a small package



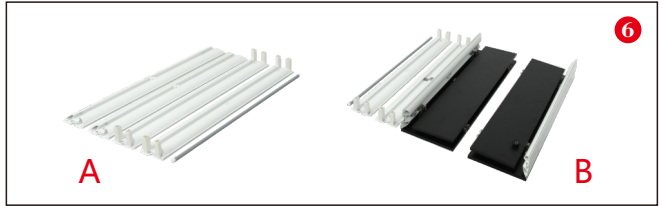
2, Open the small package



3-4, Install the frame according to the labels



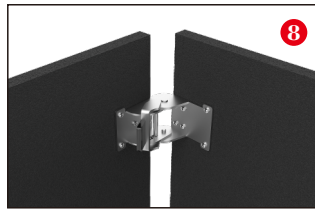
5, Front counter finished



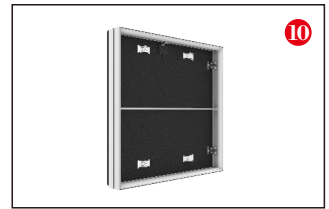
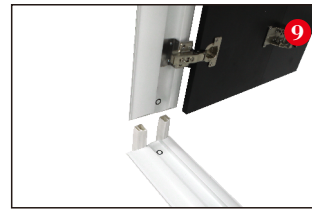
6, Part A and Part B are packed into the big package



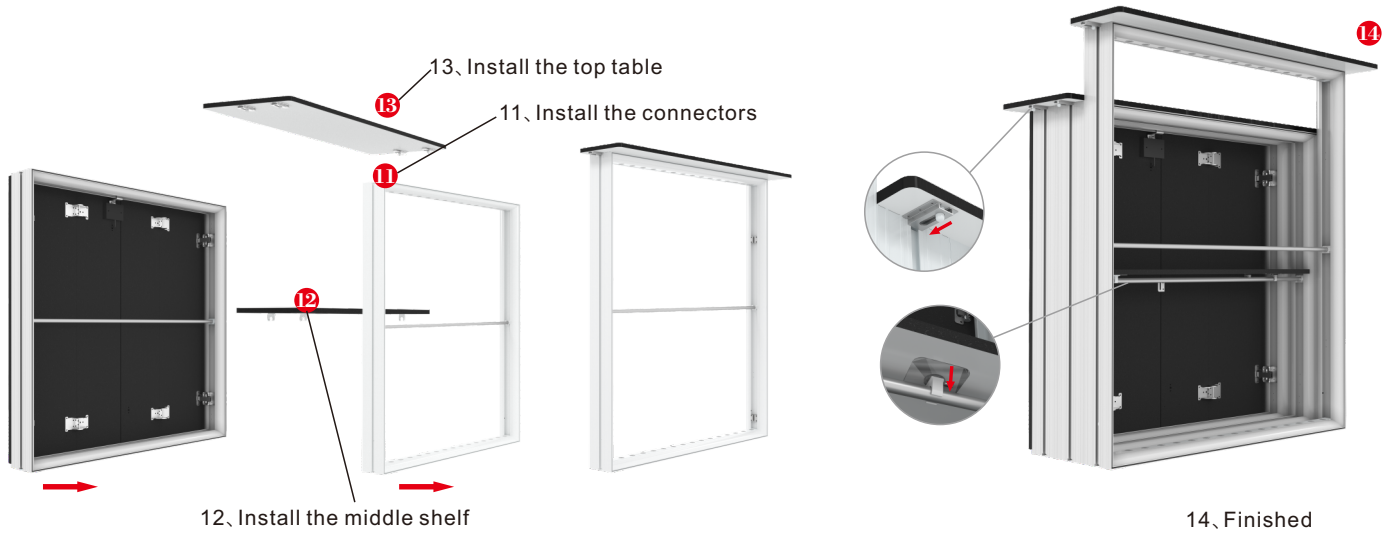
7, Install part A according to the labels, Part A finished.



8-9, Install part B according to the labels



10, Part B finished

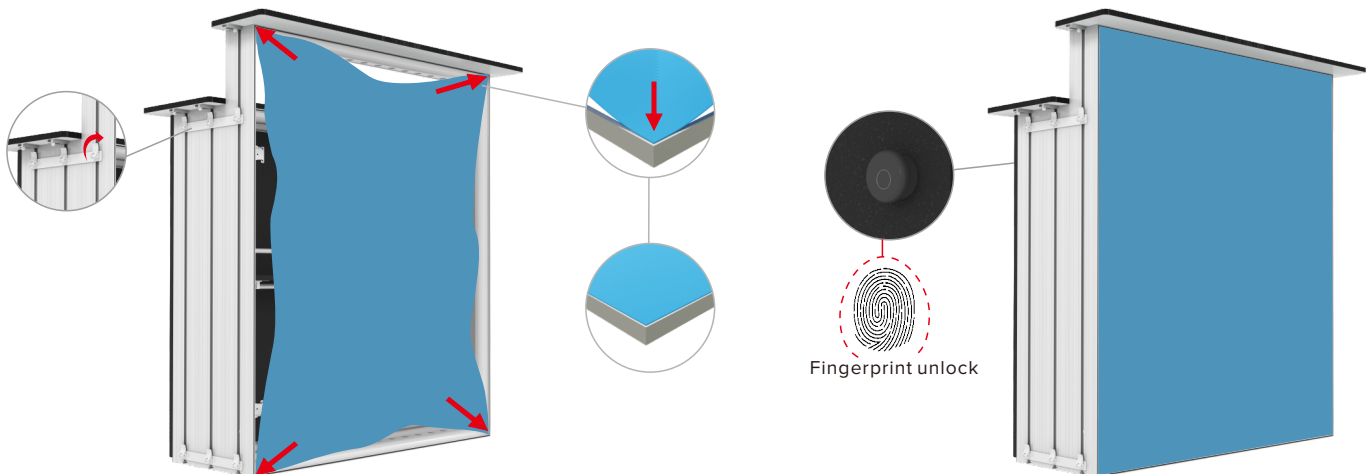


12, Install the middle shelf

13, Install the top table

11, Install the connectors

14, Finished



Fingerprint unlock