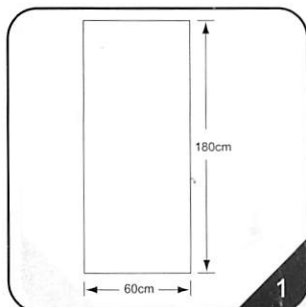


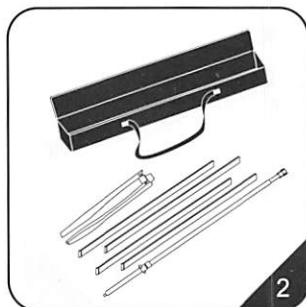
INSTALLATION STEPS 10.09

C-8A

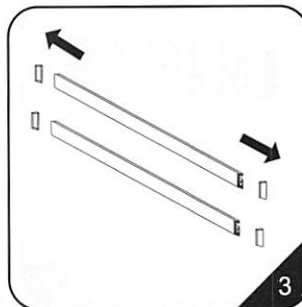
Modern appearance, stable quality, practicability & multiformity



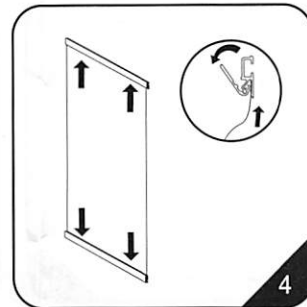
1. The roll width is 60cm, height is 180cm.



2. The case should contain a base unit, a telescopic pole and 4 snap bars.

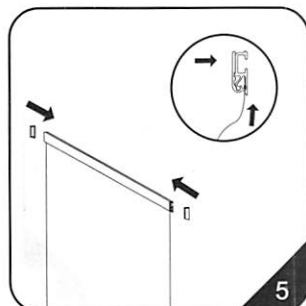


3. Remove the plastic end caps from the upper and bottom beams.

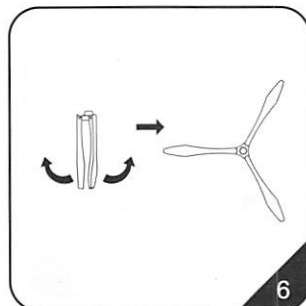


4. Swing open the snap bars' locking lip in order to attach the top & bottom edge of the banner. (Make sure the front of the banner is on the same side as the lip).

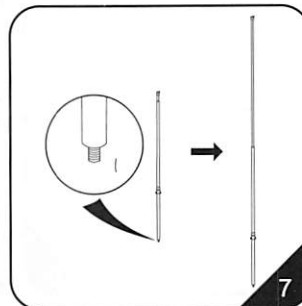
! The material thick should be between 0.2-0.4mm.



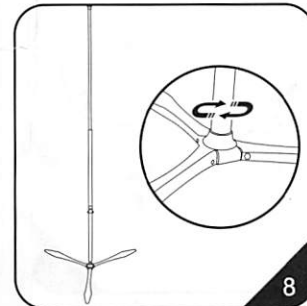
5. Slide the top banner edge under the lip.



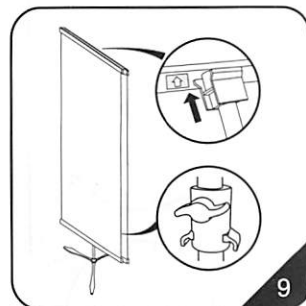
6. Unfold the base unit, as the pic. Showing.



7. Extend the top part from the telescopic pole.



8. Tighten the whole pole to the base unit.



9. The hook at the top of the pole slips into the rear slot of the banner beam. The arrow on the snap bar indicates the centre. Meanwhile catching the bottom snap bar to the down plastic part of the pole. (same process for another side).

NEXT PAGE

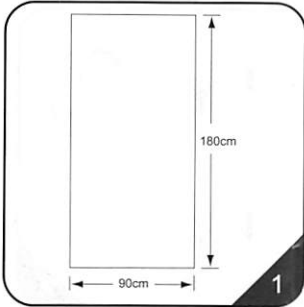


CAUTION:
PLEASE READ THE INSTRUCTIONS BEFORE INSTALLING PRODUCTS

INSTALLATION STEPS 10.09

C-8B,8C

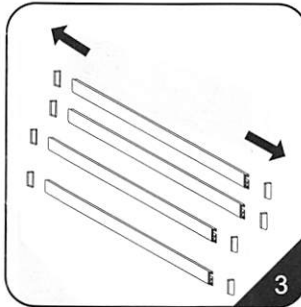
Modern appearance, stable quality, practicability & multiformity



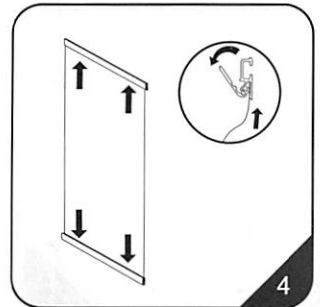
1. The roll width is 90cm, height is 180cm.



2. The case should contain a base unit, a telescopic pole and 4 snap bars.

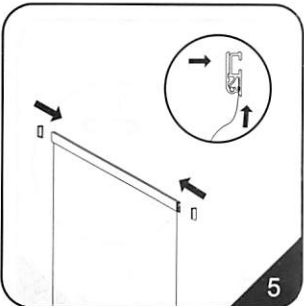


3. Remove the plastic end caps from the upper and bottom snap bars.

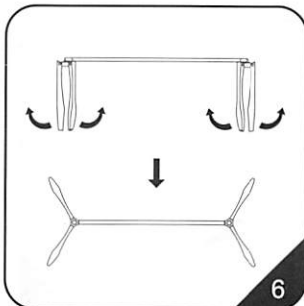


4. Swing open the snap bars' locking lip in order to attach the top & bottom edge of the banner. (Make sure the front of the banner is on the same side as the lip).

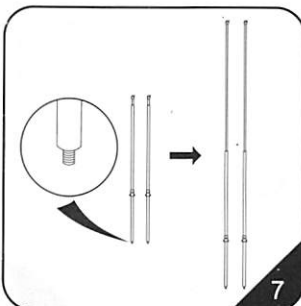
! The material thick should be between 0.2-0.4mm.



5. Slide the top banner edge under the lip.



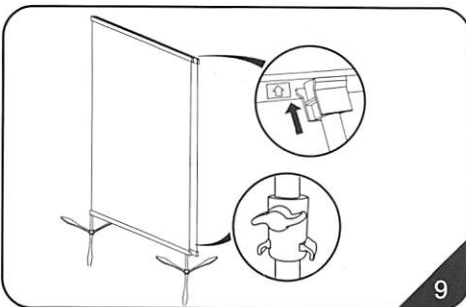
6. Unfold the base unit, as the pic. Showing.



7. Extend the top part from the telescopic pole.



8. Tighten the whole pole to the base unit.



9. The hook at the top of the pole slips into the rear slot of the banner beam. The arrow on the snap bars indicates the centre. Meanwhile catching the bottom snap bars to the down plastic part of the pole. (same process for another side).

THE FOLLOWING STEPS ACCOUNT FOR C-8C

